



Monday 8th December 2025

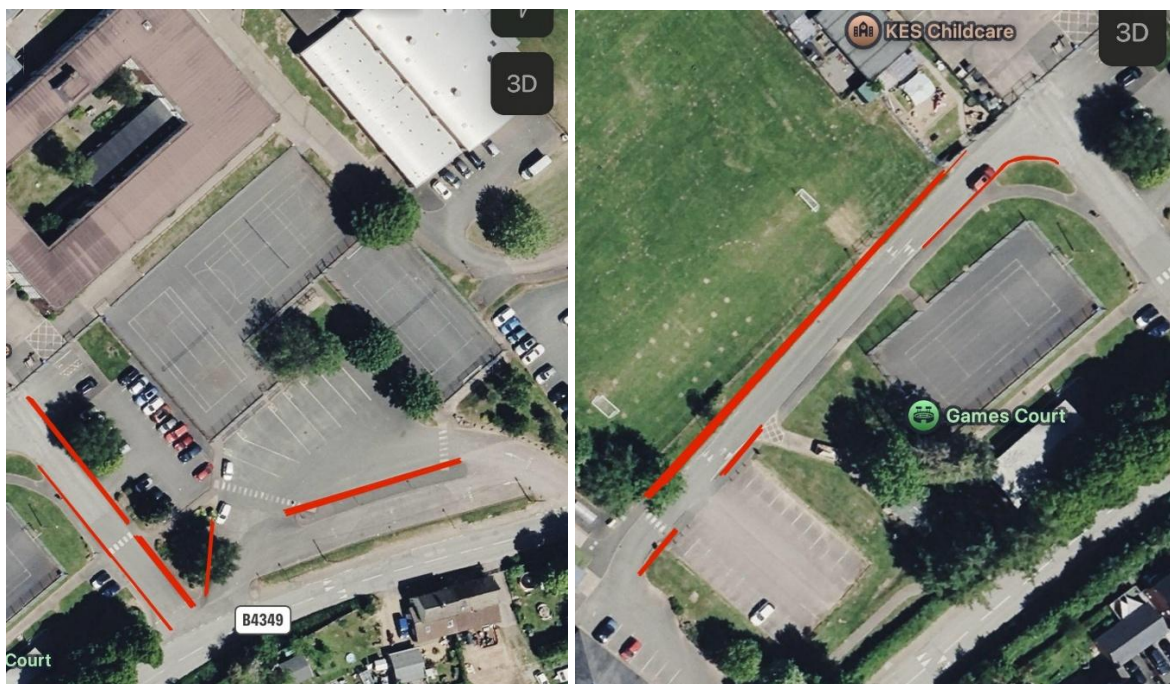
Dear Parents and Carers,

I am writing to ask for your support in helping us maintain a safe and considerate environment during school drop-off and collection times.

As you know, parking on the school site is limited. However, we are fortunate to have significantly more capacity than many other local schools, and with everyone's cooperation, we can ensure it remains safe and functional for all.

Recently, we have noticed an increase in dangerous and inconsiderate parking, including cars stopping in bus bays, on or too close to zebra crossings, and in other areas that must remain clear for pupil safety. This creates hazards for children, parents, and other drivers.

The images below highlight areas (in red) where parents must not park under any circumstances.



We are exploring options for more permanent markings and signage but for now, ask you to follow the requests above with regards to where is safe to park. We will also ensure that there is staff presence from both schools.

To help reduce congestion, we strongly encourage families who live within the village to walk to school whenever possible. Even walking part of the journey can make a meaningful difference to traffic flow and safety during peak times.

We have also become aware that some vehicles are travelling too quickly when entering and leaving the site. For everyone's safety, new signage will soon be installed to clearly indicate

Kingstone, Hereford HR2 9HJ • Tel 01981 250338

Email: ktpsadmin@kingstoneacademy.co.uk • www.kingstone-thruxton.hereford.sch.uk

Head of School: Mrs Amy Preece

that the maximum speed on the school site is 5mph. Please drive slowly and remain vigilant at all times.

Finally, a reminder to be considerate when choosing where to park. Disabled parking bays must only be used by drivers who hold a valid Blue Badge. These spaces are essential for families who genuinely need them.

Thank you for your cooperation in helping us keep our school site safe for all pupils and visitors. Your support makes a real difference.

This letter is also being sent to KHS families so that all can support in ensuring drop off and collection times run smoothly and safely.

If you would like to discuss this further, please do not hesitate to contact me.

A handwritten signature in black ink, appearing to read 'A. Preece'.

Amy Preece

Head of School